

"QUICK-START" PDF Instructions

To create a PDF from any of the Adobe applications (Illustrator, InDesign, Photoshop) follow the instructions below. **NOTE:** If you are ordering a "Self-service" product, please use the appropriate template and follow the PDF instructions it contains.

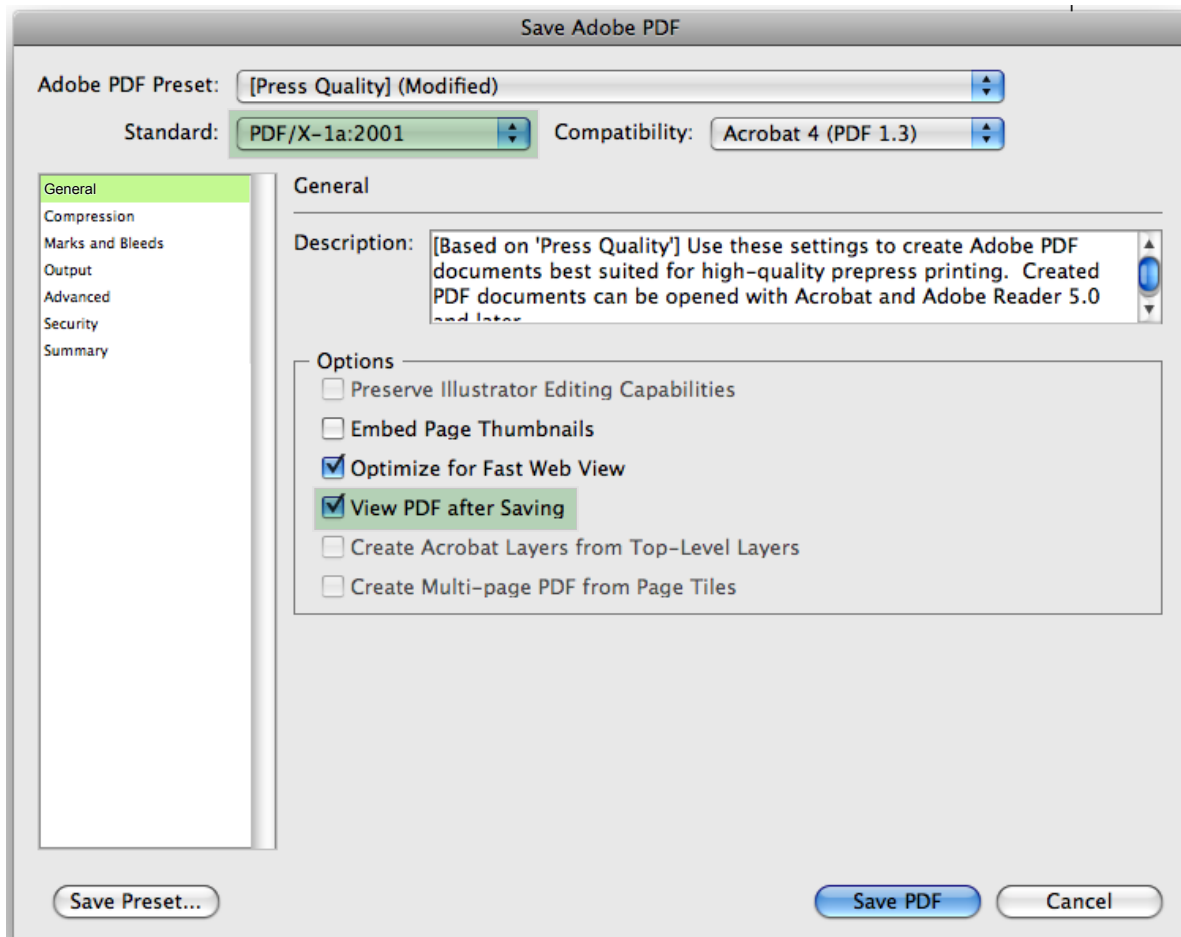
Save As... (Illustrator/Photoshop) or Export...(InDesign).

Select PDF as the format.

In the "General" Section:

Set "Standard" to PDF/X-1a:2001

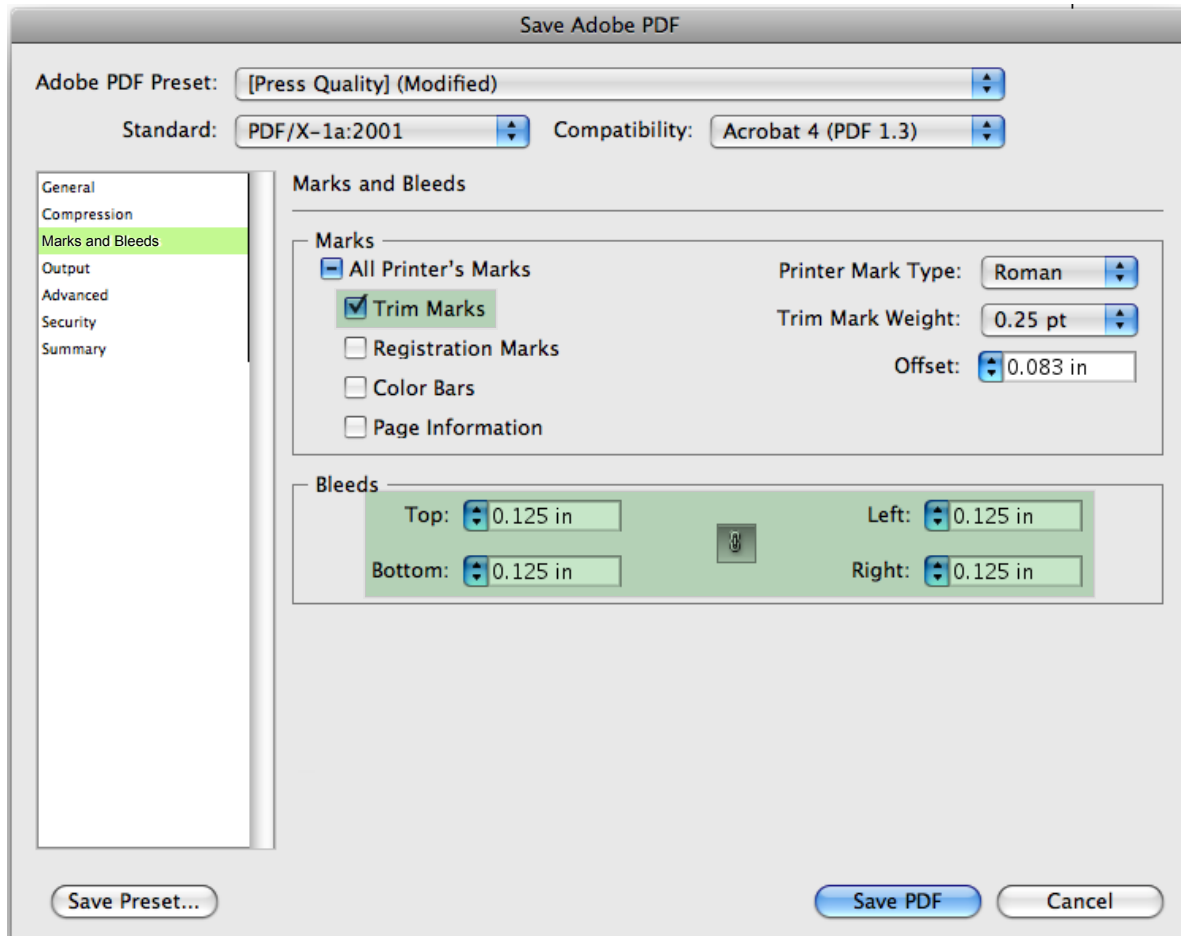
Check View PDF after Saving



In the "Marks and Bleeds" section (InDesign and Illustrator only):

Under Marks, Choose Trim Marks

Set "Bleeds" to .125 inch on all sides.



In the "Output" section:

Set "Color Conversion" to Convert to Destination (Preserve Numbers)

Set "Destination" to US Sheetfed Coated v2

The image shows a screenshot of the "Save Adobe PDF" dialog box. The "Output" section is selected in the left-hand sidebar. The "Color" section is expanded, showing the following settings:

- Color Conversion: Convert to Destination (Preserve Numbers)
- Destination: U.S. Sheetfed Coated v2
- Profile Inclusion Policy: Don't Include Profiles

The "PDF/X" section is also expanded, showing the following settings:

- Output Intent Profile Name: U.S. Sheetfed Coated v2
- Output Condition Name: (empty text field)
- Output Condition Identifier: (empty text field)
- Registry Name: (empty text field)
- Mark as Trapped

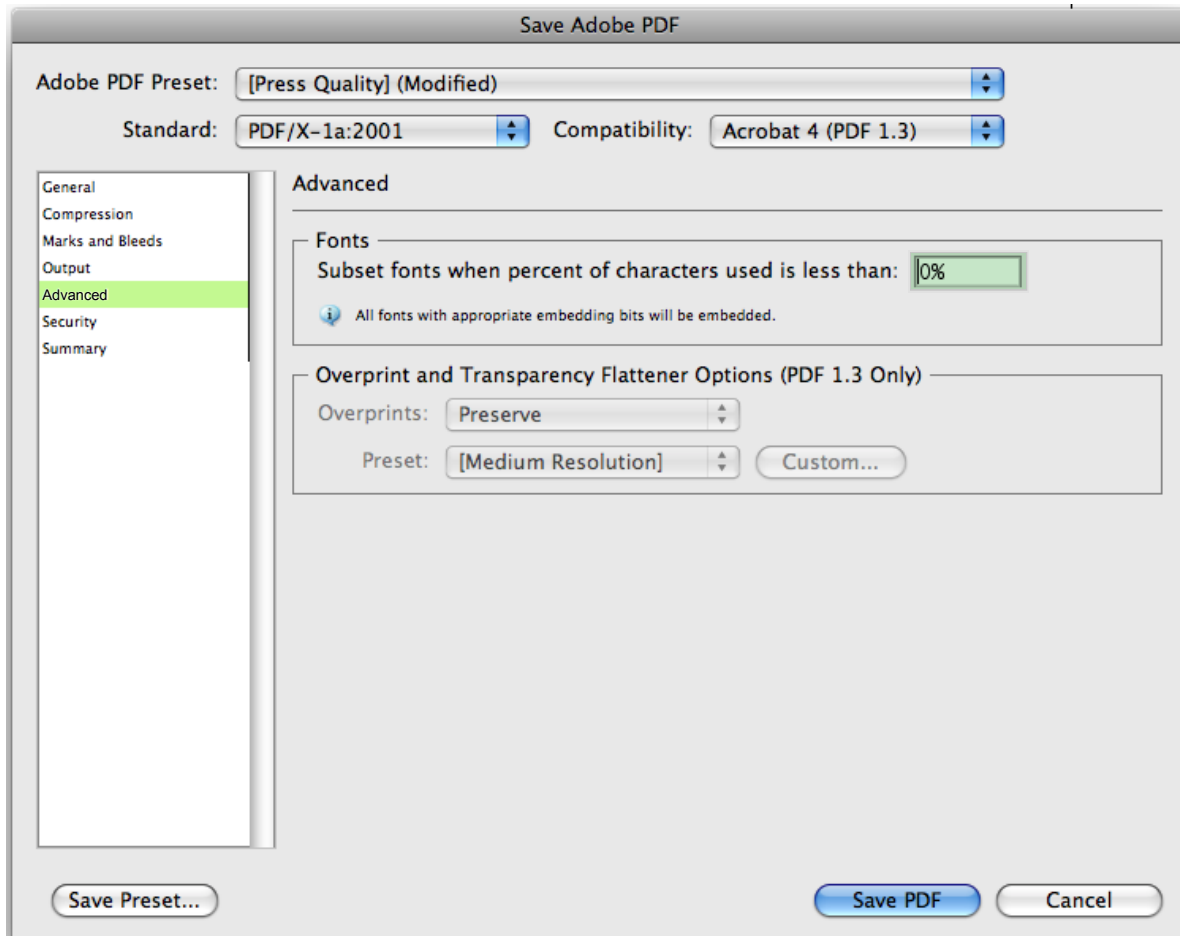
The "Description" section is empty, with the text "Shows which profiles to include, if any." below the label.

At the bottom of the dialog box, there are three buttons: "Save Preset...", "Save PDF", and "Cancel".

In the "Advanced" section:

Set "subset fonts..." to 0%.

Click Save PDF. You now have a "Press Ready" PDF ready to upload to Printlife!



Why PDF?

The preferred file format for Printlife orders is PDF, for several reasons:

It is a "locked" file format, which can eliminate file variations due to platform, software or version issues.

It is a compressed file format, which means smaller files and faster upload times.

It is a single file format, which makes for faster and easier uploads (no need to upload fonts or links separately).

By sending us a PDF you are helping to insure that your job proceeds quickly, smoothly and with no unexpected "surprises."

If you are using one of the Adobe® Creative Suite® applications and are already comfortable with the PDF creation process, please see the "Quick-Start" instructions above. If you are a QuarkXPress® user or need more detailed instructions on how to create a PDF from one of the Adobe applications, please call Printlife customer service at 1-877-305-4097